



Production Worksheet

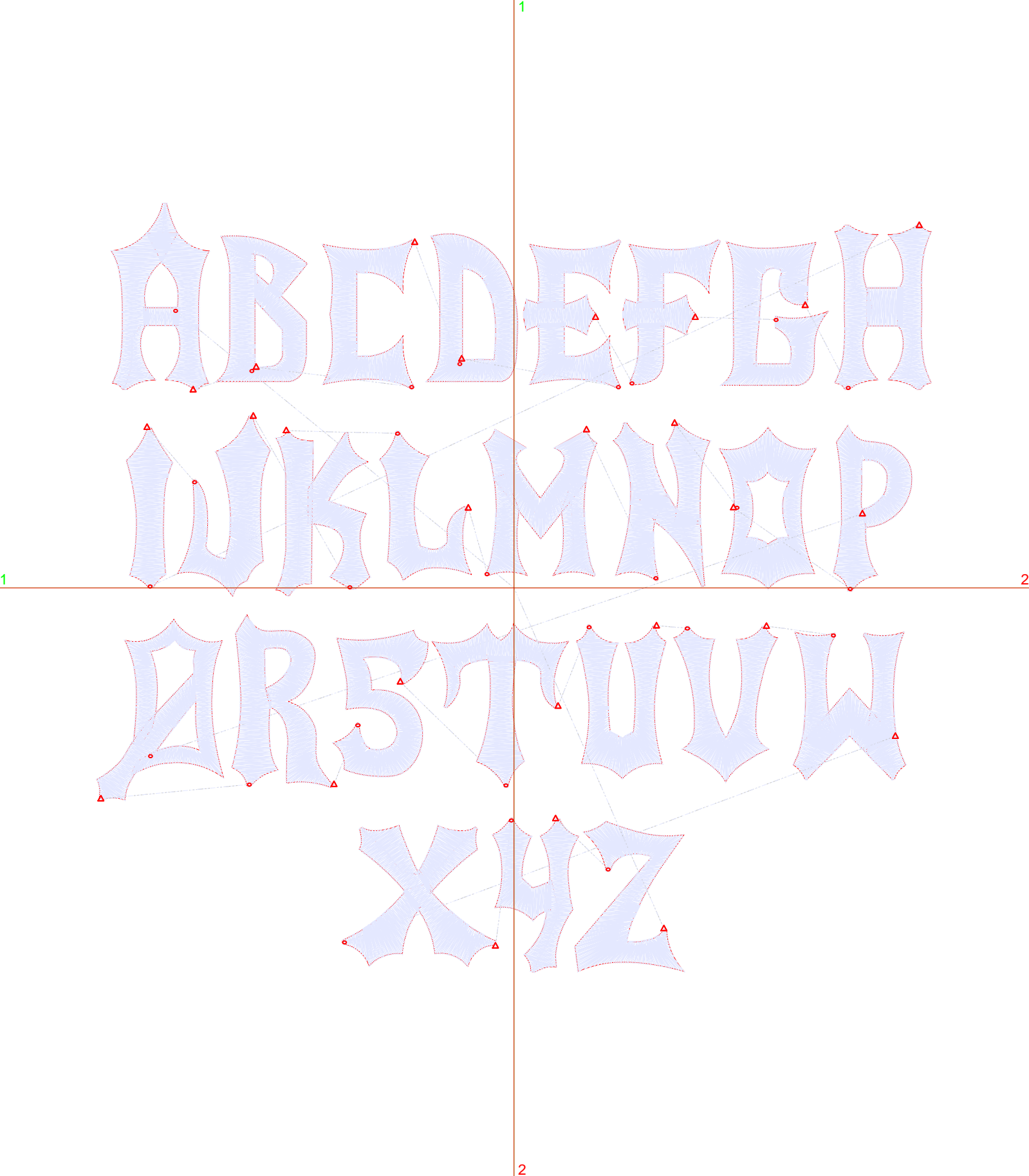
EmbroideryStudio 2025 - Designing


\*HALLOWEEN FONT - HAT\*

Design: Halloween Font - Hat

Title:

Stitches:	18.663
Height:	6.23 in
Width:	6.76 in
Colors:	1
Colorway:	Colorway 1
Zoom:	1:1



Machine format:	Tajima
Color changes:	0
Stops:	1
Trims:	26
Fabric:	Pure Cotton
Required stabilizer:	Topping: Backing: Tear Away x 2
Appliqués:	0
Left:	85.9 mm
Right:	85.9 mm
Up:	79.1 mm
Down:	79.1 mm
EndX:	0.00 in
EndY:	0.00 in
Area	42.13 in²
Max stitch:	12.0 mm
Min stitch:	0.3 mm
Max jump:	7.0 mm
Total thread:	506.89ft
Total bobbin:	227.62ft
Stop Sequence:	
#	<u>N#</u> <u>Color</u> <u>St.</u> <u>Code</u> <u>Name</u> <u>Chart</u>
1.	1  18.661 1801 Madeira PolyNeon 40


Color Film

EmbroideryStudio 2025 - Designing

\*HALLOWEEN FONT - HAT\*

Design: Halloween Font - Hat

Title:

Stitches:	18.663	
Height:	6.23 in	
Width:	6.76 in	
Colors:	1	
Colorway:	Colorway 1	
Zoom:	0.28	



Color: 1  
Stop: 1  
Element:  
Code: 1801  
Name:  
Chart: Madeira PolyNeon 40  
Stitches: 18.661  
Thread used: 506.56ft